

Art on the Walls

ELEVEN STANWIX

WINTER 2022

Eva Trout

Staycee Pearl

Industrial Arts Workshop



GREATER PITTSBURGH
ARTS COUNCIL
Arts loud and clear

Welcome

Welcome to the 11 Stanwix Art on the Walls Exhibition.

Owned by M & J Wilkow, LTD, a Chicago-based Real Estate Management company, the Eleven Stanwix lobby will feature four Art on the Walls exhibitions, highlighting new regional artists within each exhibition. Each presentation will be displayed for approximately three months on kiosks and pedestals within the lobby.

By participating in the Art on the Walls program, M & J Wilkow celebrates Pittsburgh's creative community through the exhibition of artwork honoring the people and places of Pittsburgh for the enjoyment of tenants and visitors to Eleven Stanwix.

This exhibition in Eleven Stanwix features the fantastical work of emerging and established artists, from the student collaborations of the Industrial Arts Workshop to the ethereal explorations of Eva Trout and Staycee Pearl. Join these artists on a sensory adventure in this light-filled lobby, and consider taking a new perspective home with you.

GREATER PITTSBURGH
ARTS COUNCIL



Arts loud and clear

Supporting

Artists

About Art on the Walls

The Art on the Walls program began in 2010 as a biannual, solo exhibition opportunity for southwestern Pennsylvania artists in the Greater Pittsburgh Arts Council's office. It has since grown to display artwork in seven corporate and government locations and garnered more than \$60,000 in art sales for participating artists.

For many emerging and mid-career visual artists, it's difficult to break into gallery spaces and establish visibility as professional artists. Art on the Walls reduces those barriers, connecting businesses to local artists and, in doing so, cultivating new art patrons. The program also helps businesses build lasting collections while showing their commitment and support for the region's artists.

All work is available for sale, unless noted otherwise. Purchase a piece today by contacting Art on the Walls Clients Manager, Erin O'Neill, at eoneill@pittsburghartscouncil.org or 412-512-3125.

Art in this exhibition is arranged by kiosk going clockwise when you enter the lobby. Each kiosk's pieces are also arranged clockwise.

Meet the Artists

Industrial Arts Workshop

It is the mission of the Industrial Arts Workshop (IAW) to inspire artistic literacy in the city of Pittsburgh and beyond by offering enrichment opportunities that advance the understanding and process of sculpture-making artists and their work. IAW does this by creating original works of sculpture, promoting artistic literacy, inspiring, and supporting sculpture artists and through collaboration, accessible education programs, projects, and outreach. For five summers, IAW's pilot program, a mobile sculpture workshop, brought together 50 Pittsburgh youths with a shared passion for welding, creative expression, and collaboration.



From left to right:
**Seamus McKeegan,
Jadon Wilkes,
Emma Reints,
Josiah Hartly,
Kaleb Gandy,
Eros Aguilar,
Emmitt Crawford,
Silas Sanders,
and Desean Krynski**

Meet the Artists

Eva Trout

Intrinsic to the very process of making art is the simultaneous engagement of the artist with both the spiritual and the natural. Creativity itself is a divine branding on human beings, linking our image to the likeness of a Creator. However, ironically a process of creating brings the realization of our finite, frail yet beautiful humanity. Eva Trout pursues a vivid sense of hope through the art that she makes. Hope is an anchor to her soul, based on her personal faith in a magnificent Creator. She finds her expression of this hope is often juxtaposed between larger-than-life concepts of truth and childlike simplicity. She likes the visual contrast, whether it be through texture, form, line, or color, of elegance and awkwardness, of modern and bohemian. She likes loud laughter from a gentle soul and violent color with a healing calm. She makes art as a celebration of life. Her expression is through the use of vibrant color planes that at first sight appear as single fields of color, yet when gazed into – layers of color are discovered through translucency, etched gesture, and mark-making.



Meet the Artists

Staycee Pearl

Staycee Pearl interprets and mirrors culture and community through the use of layered medium, materials, and movement. Described as “a place in space where gravity pulls so much that even light cannot get out,” black holes have been a mystery throughout history. With “The Secret Life of Black Holes”, Staycee contemplates a fantastical existence where all things are possible, and where pure Blackness is most attractive and desirable. Staycee imagines not only the essence of Blackness, but that the ancestors of earthly Black people reside in these perfect spaces in peace and purity, indistinguishable from the density of Earth. These four-by-six works seek to communicate a full sensory magical experience of worlds both new and familiar. Using gesso, acrylic spray paint, and collage on wood blocks, these hand renderings are then put through a layering process of digital painting and line making, and finally mounted onto 1.5 inch thick blocks.

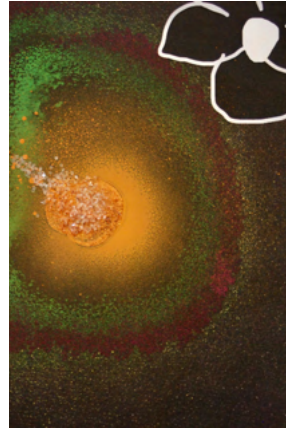


Kiosk A

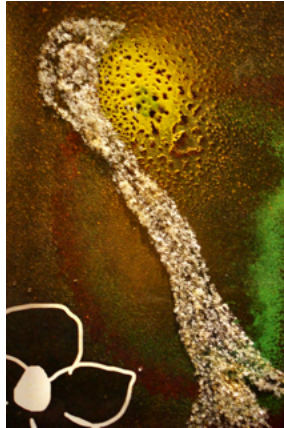
1



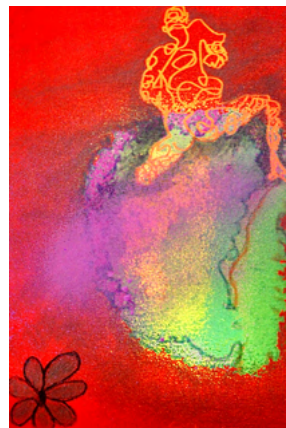
4



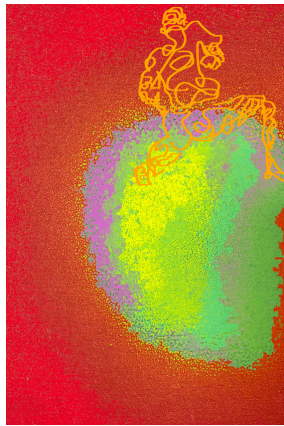
2



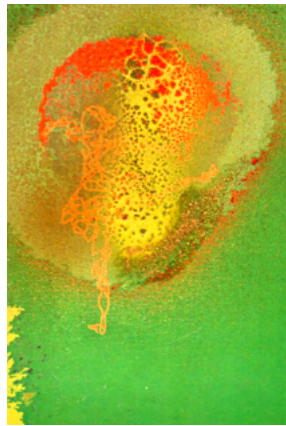
5



3



6



Window side near revolving door (east)

Staycee Pearl

1. - 6. *The Secret Life of Black Holes* // 2019

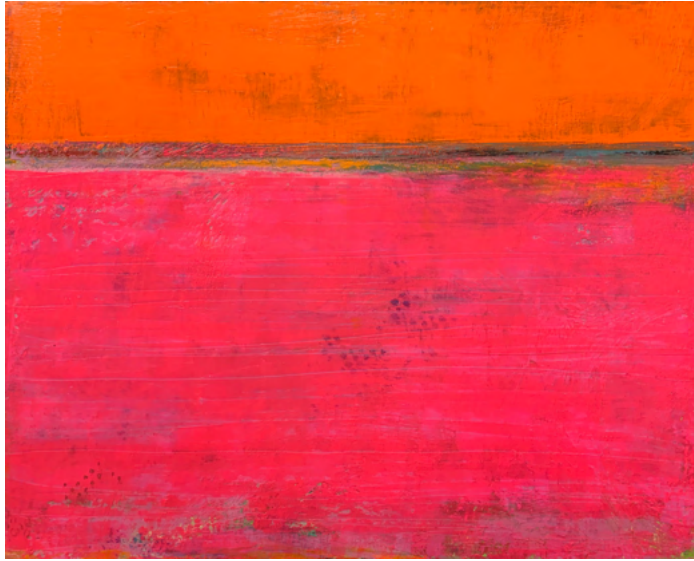
Digital print, ink, collage on card stock

6" x 4" x 1" // \$100 each

(Buy as set or individually)

Courtesy of the artist

Kiosk B



Wall side closer to elevator (east)

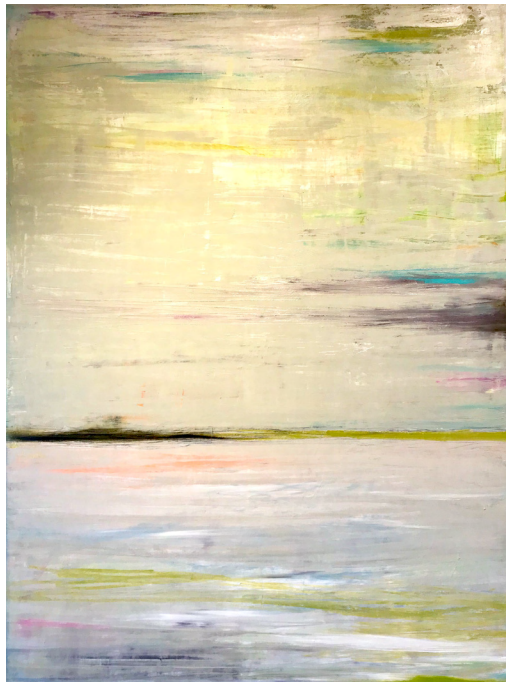
Eva Trout

7. Cherish // 2019

Oil & mixed media on canvas

24" x 30" x 1.5" // \$1,200

Courtesy of Firebox Studios



Eva Trout

8. Light Shines Through // 2019

Oil on canvas

48" x 36" // \$2,000

Courtesy of Firebox Studios

Kiosk C

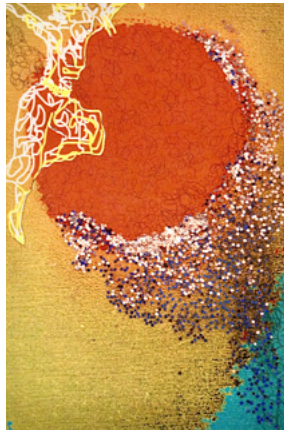
9



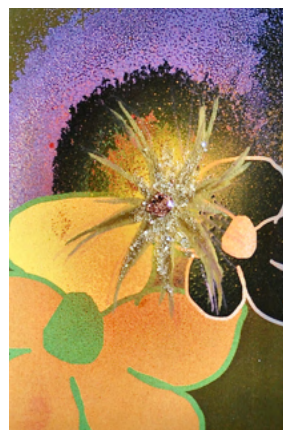
12



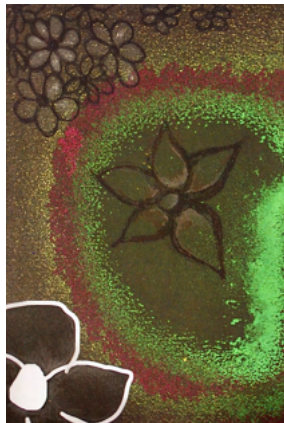
10



13



11



14



Wall side closer to point (west)

Staycee Pearl

9. - 14. *The Secret Life of Black Holes* // 2019

Digital print, ink, collage on card stock

6" x 4" x 1" // \$100 each

(Buy as set or individually)

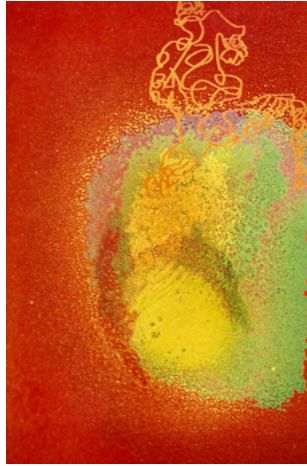
Courtesy of the artist



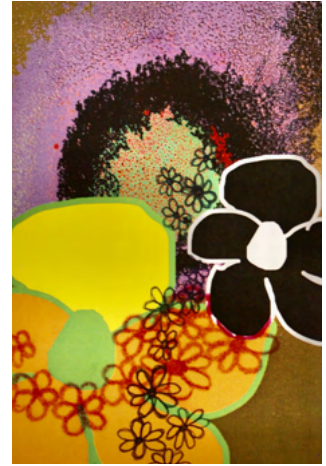
15



16



17



18

Wall side closer to point (west)

Eva Trout

15. *Lemon Sea* // 2019
Oil & mixed media on canvas
36" x 36" // \$2,000
Courtesy of Firebox Studios

Staycee Pearl

16. - 18. *The Secret Life of Black Holes* // 2019
Digital print, ink, collage on card stock
6" x 4" x 1" // \$100 each
(Buy as set or individually)
Courtesy of the artist

Pedestal



Seamus McKeegan and Jadon Wilkes

19. Tall Sunflower // 2021

Steel recycled parts

22" x 8" x 8" // \$543

Courtesy of the artists and
Industrial Arts Workshop



Emma Reints

20. Sea of Gear // 2021

Recycled Steel, gears

12" x 12" x 12" // \$543

Courtesy of the artist and
Industrial Arts Workshop

Pedestal



Jadon Wilkes

21. Welder King // 2021
Recycled Steel
12" x 10" x 10" // \$543
Courtesy of the artist and
Industrial Arts Workshop



Josiah Hartly

22. Steel Scissor // 2021
Recycled Steel
12" x 12" x 12" // \$543
Courtesy of the artist and
Industrial Arts Workshop

Stone Wall



Left side of west windows

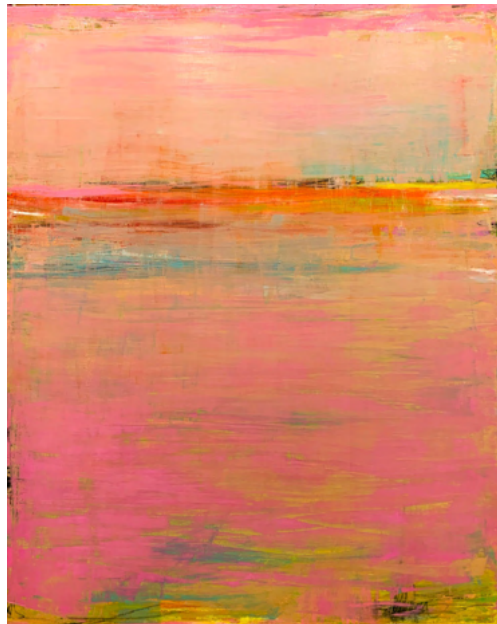
Eva Trout

23. Dreaming // 2019

Oil on canvas

36" x 48" // \$2,200

Courtesy of Firebox Studios



Eva Trout

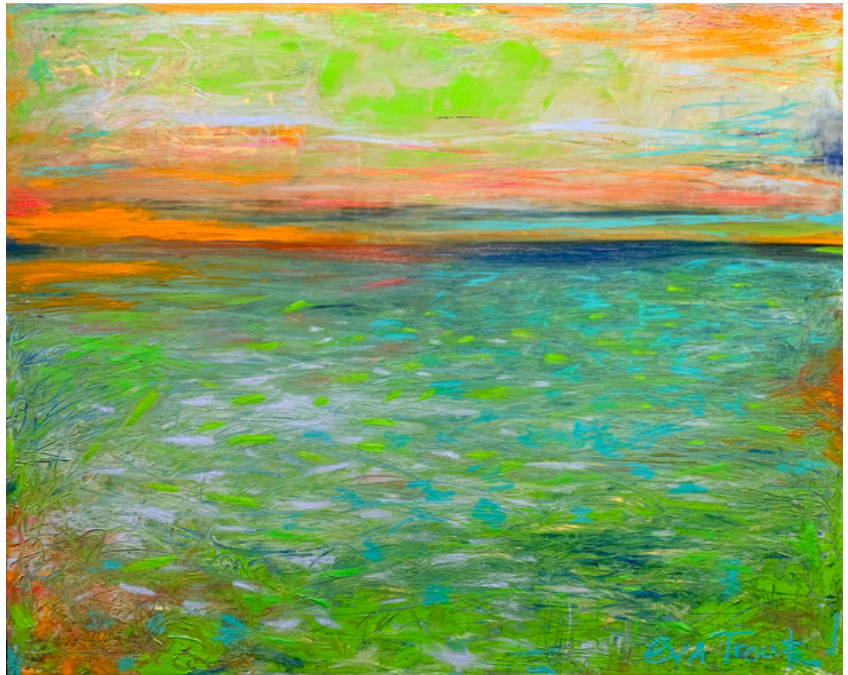
24. Love Sick // 2019

Oil & mixed media on canvas

60" x 48" // \$3,200

Courtesy of Firebox Studios

Stone Wall



Eva Trout

25. Renewal // 2021

Oil on canvas

48" x 60" // \$2,800

Courtesy of Firebox Studios

Glass Tables



Kaleb Gandy, Emma Reints, and Desean Krynski

26. Flower of Sun // 2021

Recycled steel

12" x 12" x 12" // \$543

Courtesy of the artists and
Industrial Arts Workshop



Eros Aguilar and Josiah Hartly

27. Paint thistle // 2021

Recycled steel

14" x 16" x 16" // \$543

Courtesy of the artists and
Industrial Arts Workshop

Glass Tables



Emmitt Crawford and Silas Sanders

28. Web of Community // 2021

Recycled welded steel

18" x 16" x 12" // \$543

Courtesy of the artists and
Industrial Arts Workshop

Want art

on your walls?

Could your lobby or business use some artwork?

Businesses interested in displaying regional artwork in their offices are encouraged to join the Art on the Walls program. The program's interactive and collaborative art selection process is a great way to increase staff morale, encourage collaboration, and ignite regional pride. Artwork featured in AOW exhibitions is frequently purchased by patrons, office visitors, and even employees.

Art on the Walls clients work closely with GPAC's Art on the Walls Manager Erin O'Neill to create an arts consultation package that fits their goals and budget. If you're a business interested in exhibiting artwork, please contact Erin O'Neill at **eoconnell@pittsburghartscouncil.org or 412-512-3125.**

About the Greater Pittsburgh Arts Council

The Greater Pittsburgh Arts Council champions the arts in Southwestern Pennsylvania, providing financial, professional, and political support for the arts and culture sector. Comprised of more than 600 diverse artists and nonprofit organizations, the Arts Council offers valuable research, legal and business consulting, networking, and professional development opportunities so that artists, arts leaders, and organizations can grow their skills and advance their practice.

The Arts Council provides grants for artists and arts organizations. We lead the region's arts advocacy at the local, state, and national levels, and model best practices for accessibility and equity in the arts. For more information, please visit **PittsburghArtsCouncil.org.**

GREATER PITTSBURGH
ARTS COUNCIL



www.PittsburghArtsCouncil.org

