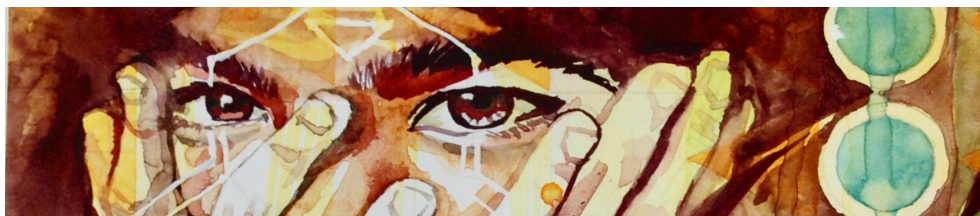


# ELEVEN STANWIX

NOVEMBER 2020 - JANUARY 2021



Art on the  
walls

## Art on the Walls at 11 Stanwix

Welcome to the newest addition to the Art on the Walls program, Eleven Stanwix. Owned by M & J Wilkow, LTD, a Chicago-based Real Estate Management company, the Eleven Stanwix lobby will feature four Art on the Walls exhibitions, highlighting new regional artists within each exhibition. Each presentation will be displayed for approximately three months on kiosks and pedestals within the lobby.

By participating in the Art on the Walls program, M & J Wilkow celebrates Pittsburgh's creative community through the exhibition of artwork honoring the people and places of Pittsburgh for the enjoyment of tenants and visitors to Eleven Stanwix.

The second exhibition in Eleven Stanwix features a delightful synergy of artists, artistic approaches, and uses of traditional media. Weidman, Jalil, and Zuzu's missions' keenly focus on raising awareness of our fellow humans' inequitable, unhealthy actions, including their impacts on physical and emotional health. In this exhibition, these perspectives challenge us as we look toward our natural environment - flora and fauna - and our social perceptions of universal beauty.

## Re-envisioning Business Spaces as Art Galleries

The Art on the Walls program began in 2010 as a biannual, solo exhibition opportunity for southwestern Pennsylvania artists in the Greater Pittsburgh Arts Council's office. It has since grown to display artwork in seven corporate and government locations and garnered more than \$60,000 in art sales for participating artists.

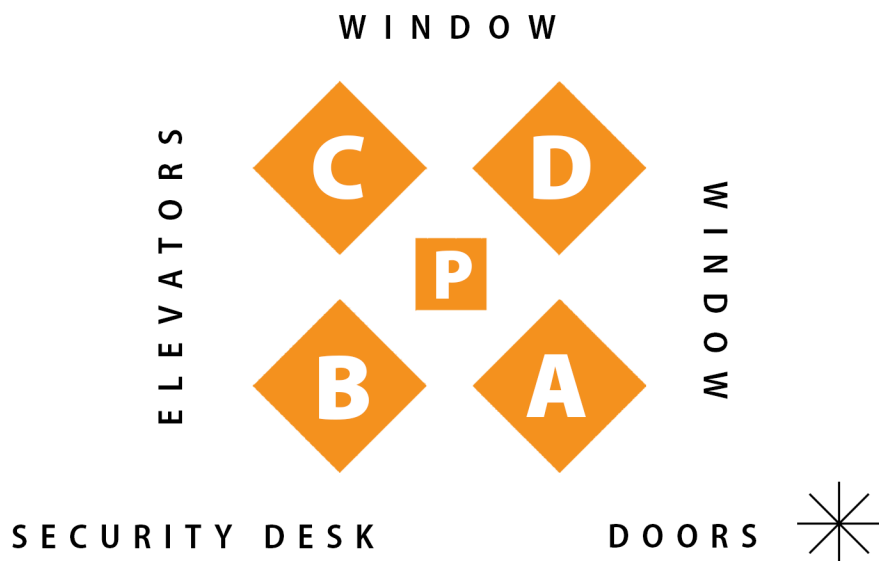
For many emerging and mid-career visual artists, it's difficult to break into gallery spaces and establish visibility as a professional artist. Art on the Walls reduces those barriers, connecting businesses to local artists and, in doing so, cultivating new arts patrons. The program also helps businesses build lasting collections while showing their commitment and support of the region's artists.

## Support Local Artists

All work is available for sale, unless noted otherwise. Purchase a piece today by contacting Art on the Walls Clients Manager, Erin O'Neill, at [eoconnell@pittsburghartscouncil.org](mailto:eoconnell@pittsburghartscouncil.org) or 412-512-3125.

## Location Key

Art in this exhibition is arranged by kiosk going clockwise when you enter the lobby. Each kiosk's pieces are also arranged clockwise.



# KARA ZUZU



Sculpting animals from clay connects me closely to the natural world while telling a humanistic and personal story. I am very intentional when choosing an animal to sculpt and allow my intuition to be my guide. Animal sculptures drive most of my work, but occasionally intersect with humans. I have always believed that all creatures possess culture, a shared animal and human quality, allowing for a natural vessel of storytelling, narration, and expression.

My commitment to equity is a deep part of who I am and is embedded in my work in subtle ways. When faced with life experiences, I activate a metaphorical compass as a way to center oneself in emotions, actions, thoughts, and morals. Animals are my medium to exchange and activate this compass. My animals can reflect peace and centeredness or push the viewer to feel uncomfortable prompting them to think through multiple perspectives. Animals are a non-threatening way to engage my viewers in an experience of awakening and self-reflection.

## Find Kara's Work

### **Kiosk A:**

Hazel

### **Kiosk B:**

Unorthodox Friendship

### **Pedestal:**

Change

### **Kiosk C:**

Balance/Unbalance

### **Kiosk D:**

El-ahrairah

# ANNIE WEIDMAN



My work challenges viewers to consider our world of disposable, man-made materials and their relationship to the natural and the timeless. I use precisely-cut pieces of discarded food boxes to create art that, at first glance, appears of traditional design and craftsmanship, but upon closer inspection exposes a surprising beauty and utility in the color and texture of what we throw away.

My earliest works incorporated traditional images from carpets and mosaics. This series was partly inspired by my 2016 trip to India. There, I visited studios where artisans toiled for months and years on sublime silk carpets and marble inlay pieces, while outside on sidewalks, people ate and slept amid teeming piles of trash. This series imagines the clash of creating exquisite, painstaking treasures from what has been tossed to the gutter.

My more recent figurative pieces are inspired from images in medieval illuminated manuscripts—expressions of enduring faith—but now assembled from the remnants of consumerist clutter. Works based on Renaissance paintings and other traditional subjects contrast the timelessness of nature with the ephemera of man-made material.

The small pieces are from an ongoing series of natural objects. The “Bad but Beautiful” series depicts invasive insects that threaten our forests and agriculture.

## Find Annie's Work

### Kiosk A:

Spotted Lantern Fly  
Emerald Ash Borer  
Asian Longhorned Beetle  
Brown Marmorated Stink Bug

### Kiosk B:

Spring Autumn diptych  
Beekeeper

### Kiosk C:

Double A (Butterbug)

### Kiosk D:

Lawn and Leaf



## NATIQ JALIL

Natiq Jalil is an emerging artist who specializes in watercolor. He is a self-taught artist and believes true art begins during those moments between being asleep and being awake. Natiq's work is prized by many private collectors and can be seen in many homes and businesses on the East Coast and throughout the Midwest in the US, and around the world. Natiq is currently creating new collections addressing relevant issues through Afrofuturism such as cultural appropriation, systemic racism, gender roles, and the beauty of people of color.

## Find Natiq's Work

### Kiosk A:

Energy  
Polarity  
Momentum

### Kiosk B:

Gravity

### Kiosk C:

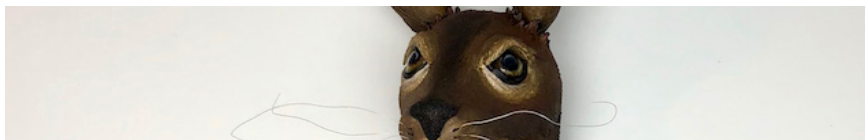
Frequency  
Magnetism

### Kiosk D:

Wave Function  
Resonance

# KIOSK A

*These are details of each art piece featured in this exhibition.*



**1. Hazel, 2019**

Clay // 26" x 14" x 6.5" // \$900

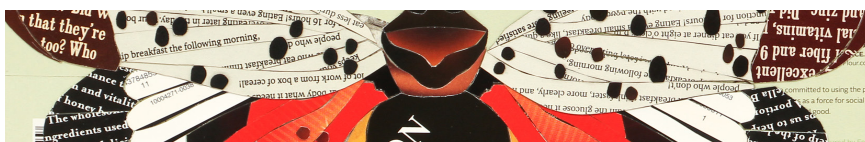
Kara Zuzu



**2. Energy, 2020**

Watercolor on paper // 14" x 11" // \$500

Natiq Jalil



**3. Spotted Lantern Fly, 2018**

Preprinted paperboard boxes on foam core // 7.5" x 11.25" // \$250

Annie Weidman



**4. Emerald Ash Borer, 2018**

Preprinted paperboard boxes on foam core // 7.5" x 11.25" // \$250

Annie Weidman

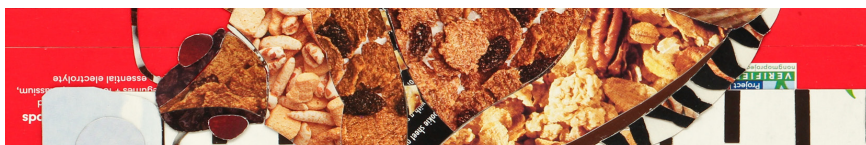


**5. Asian Longhorned Beetle, 2018**

Preprinted paperboard boxes on foam core // 7.5" x 11.25" // \$250

Annie Weidman





**6. *Brown Marmorated Stink Bug*, 2018**

Preprinted paperboard boxes on foam core // 7.5" x 11.25" // \$250

Annie Weidman



**7. *Polarity*, 2020**

Watercolor on paper // 14" x 11" // \$500

Natiq Jalil



**8. *Momentum*, 2020**

Watercolor on paper // 14" x 11" // \$500

Natiq Jalil

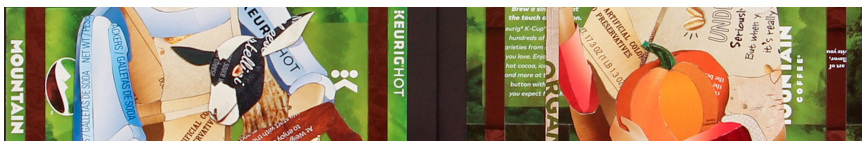
# KIOSK B



**9. *Gravity*, 2020**

Watercolor on paper // 14" x 11" // \$500

Natiq Jalil



**10. *Spring Autumn diptych*, 2018**

Preprinted paperboard boxes on foam core // 34" x 21" // \$1,600

Annie Weidman





**11. *Beekeeper*, 2018**

Preprinted paperboard boxes on foam core // 34" x 10" // \$800  
Annie Weidman



**12. *Unorthodox Friendship*, 2019**

Clay // 10" x 7" x 3.5" // \$375  
Kara Zuzu

# KIOSK C



**13. *Frequency*, 2020**

Watercolor on paper // 14" x 11" // \$500  
Natiq Jalil



**14. *Magnetism*, 2020**

Watercolor on paper // 14" x 11" // \$500  
Natiq Jalil



**15. Double A (Butterrug), 2019**

Preprinted paperboard boxes on foam core // 39.5" x 31.5" // \$1,000  
Annie Weidman



**16. Balance/Unbalance, 2020**

Clay // 14" x 18" x 6" // \$795  
Kara Zuzu



**17. Fiver, 2020**

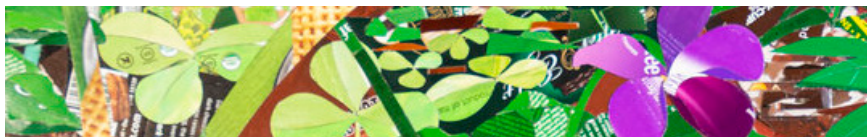
Clay // 17" x 12" x 6.5" // \$900  
Kara Zuzu

# KIOSK D



**18. El-ahrairah, 2019**

Clay // 19" x 6.5" x 8" // \$900  
Kara Zuzu



**19. Lawn and Leaf, 2019**

Preprinted paperboard boxes on foam core // 27.5" x 21" // \$1,000

Annie Weidman



**20. Wave Function, 2020**

Watercolor on paper // 14" x 11" // \$500

Natiq Jalil

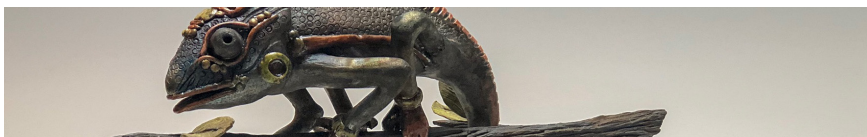


**21. Resonance, 2020**

Watercolor on paper // 14" x 11" // \$500

Natiq Jalil

# PEDESTAL



**22. Change, 2019**

Clay and wood // 9.5" x 16" x 13" // \$550

Kara Zuzu

## Interested in art on your walls?

Businesses interested in displaying regional artwork in their offices are encouraged to join the Art on the Walls program. The program's interactive and collaborative art selection process is a great way to increase staff morale, encourage collaboration, and ignite regional pride. Artwork featured in AOW exhibitions is frequently purchased by patrons, office visitors, and even employees.

AOW clients work closely with GPAC's Art on the Walls Manager Erin O'Neill to create an arts consultation package that fits their goals and budget. If you're a business interested in exhibiting artwork, please contact Erin O'Neill at [eoconnell@pittsburghartscouncil.org](mailto:eoconnell@pittsburghartscouncil.org) or 412-391-2060 ext. 244 to set up an introductory call.

## About the Greater Pittsburgh Arts Council

The Greater Pittsburgh Arts Council (GPAC) champions the arts in Southwestern Pennsylvania, providing financial, professional, and political support for the arts and culture sector. Comprised of more than 600 diverse artists and nonprofit organizations, GPAC offers valuable research, legal and business consulting, networking, and professional development opportunities so that artists, arts leaders, and organizations can grow their skills and advance their practice.

GPAC provides grants for artists and arts organizations. We also lead the region's arts advocacy at the local, state, and national level, and model best practices for accessibility and equity in the arts. For more information, please visit [PittsburghArtsCouncil.org](http://PittsburghArtsCouncil.org).

ELEVEN || STANWIX

GREATER PITTSBURGH  
ARTS COUNCIL



**Arts loud and clear**



**PittsburghArtsCouncil.org**