



## The Creative Industries in PA State Senate District 43

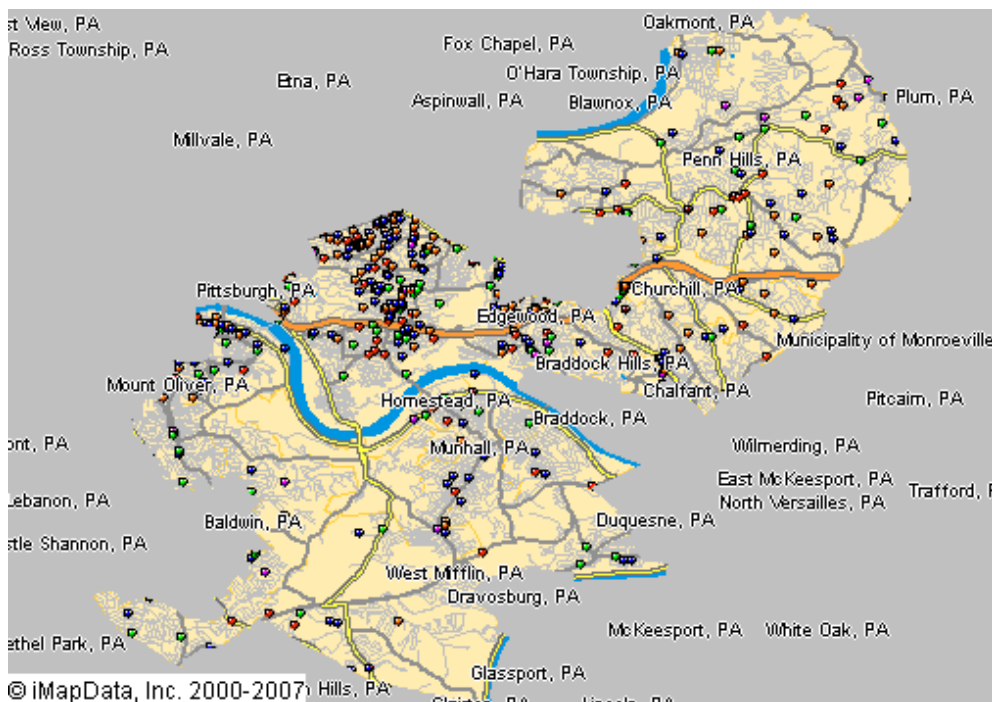
This *Creative Industries* report offers a research-based approach to understanding the scope and economic importance of the arts in **PA State Senate District 43**. The creative industries are composed of arts-centric businesses that range from nonprofit museums, symphonies, and theaters to for-profit film, architecture, and advertising companies. The creative industries are the high-octane fuel that drives the "information economy," the fastest growing segment of the nation's economy.

Nationally, there are 612,095 businesses in the U.S. involved in the creation or distribution of the arts that employ 2.98 million people, which is 4.3 percent of all businesses and 2.2 percent of all employees. Between 2007 and 2008, the number of arts businesses and employees grew 12 percent. The source for these data is Dun & Bradstreet, the most comprehensive and trusted source for business information in the U.S. Growth of the businesses that comprise the creative industries was greater than the increase among the 14.3 million businesses tracked by Dun & Bradstreet.

**As of January 2008, PA State Senate District 43 is home to 436 arts-related businesses that employ 1,870 people.** These arts-centric businesses play an important role in building and sustaining economic vibrancy. They employ people, spend money locally, generate government revenue, and are a cornerstone of tourism and economic development. The map below provides a clear picture of the creative industries in **PA State Senate District 43**, with each dot representing an arts-centric business.

### 436 Arts-Related Businesses in PA State Senate District 43 Employ 1,870 People

- Arts-Related Business**
- Museum/Collections
  - Performing Arts
  - Visual/Photography
  - Film, Radio, TV
  - Design/Publishing
  - Arts Schools/Services





## Arts-Related Business and Employment in PA State Senate District 43 January 2008

CATEGORY	BUSINESSES	EMPLOYEES
<b>Museums and Collections</b>	<b>7</b>	<b>159</b>
Museums	3	136
Zoos and Botanical	3	12
Historical Society	1	11
<b>Performing Arts</b>	<b>95</b>	<b>262</b>
Music	42	167
Theater	1	1
Dance	1	5
Services & Facilities	17	45
Performers	34	44
<b>Visual Arts/Photography</b>	<b>152</b>	<b>529</b>
Crafts	16	84
Visual Arts	23	59
Photography	82	231
Services	31	155
<b>Film, Radio and TV</b>	<b>52</b>	<b>382</b>
Motion Pictures	38	207
Television	6	164
Radio	8	11
<b>Design and Publishing</b>	<b>109</b>	<b>453</b>
Architecture	36	138
Design	46	146
Publishing	2	6
Advertising	25	163
<b>Arts Schools and Services</b>	<b>21</b>	<b>85</b>
Arts Councils	1	5
Arts Schools and Instruction	18	74
Agents	2	6
<b>GRAND TOTAL</b>	<b>436</b>	<b>1,870</b>

Note: As the source of these data is based solely on businesses that have registered with Dun & Bradstreet, our analyses indicate an under-representation of nonprofit arts organizations and individual artists. Therefore, this Creative Industries report should be considered a conservative estimate. For more information, maps, and to make sure you are included in our Creative Industries research, visit [www.AmericansForTheArts.org/CreativeIndustries](http://www.AmericansForTheArts.org/CreativeIndustries)



## Arts-Related Business and Employment in PA State Senate District 43 2007 to 2008

CATEGORY	BUSINESSES			EMPLOYEES		
	2007	2008	% Change	2007	2008	% Change
<b>Museums and Collections</b>	<b>8</b>	<b>7</b>	<b>-12.50%</b>	<b>161</b>	<b>159</b>	<b>-1.24%</b>
Museums	5	3	-40.00%	140	136	-2.86%
Zoos and Botanical	2	3	50.00%	10	12	20.00%
Historical Society	1	1	0.00%	11	11	0.00%
<b>Performing Arts</b>	<b>81</b>	<b>95</b>	<b>17.28%</b>	<b>243</b>	<b>262</b>	<b>7.82%</b>
Music	35	42	20.00%	156	167	7.05%
Theater	1	1	0.00%	1	1	0.00%
Dance	0	1	100.00%	0	5	500.00%
Services & Facilities	18	17	-5.56%	47	45	-4.26%
Performers	27	34	25.93%	39	44	12.82%
<b>Visual Arts/Photography</b>	<b>143</b>	<b>152</b>	<b>6.29%</b>	<b>506</b>	<b>529</b>	<b>4.55%</b>
Crafts	17	16	-5.88%	81	84	3.70%
Visual Arts	22	23	4.55%	56	59	5.36%
Photography	76	82	7.89%	219	231	5.48%
Services	28	31	10.71%	150	155	3.33%
<b>Film, Radio and TV</b>	<b>59</b>	<b>52</b>	<b>-11.86%</b>	<b>425</b>	<b>382</b>	<b>-10.12%</b>
Motion Pictures	49	38	-22.45%	253	207	-18.18%
Television	3	6	100.00%	158	164	3.80%
Radio	7	8	14.29%	14	11	-21.43%
<b>Design and Publishing</b>	<b>104</b>	<b>109</b>	<b>4.81%</b>	<b>403</b>	<b>453</b>	<b>12.41%</b>
Architecture	36	36	0.00%	139	138	-0.72%
Design	40	46	15.00%	87	146	67.82%
Publishing	2	2	0.00%	6	6	0.00%
Advertising	26	25	-3.85%	171	163	-4.68%
<b>Arts Schools and Services</b>	<b>18</b>	<b>21</b>	<b>16.67%</b>	<b>36</b>	<b>85</b>	<b>136.11%</b>
Arts Councils	1	1	0.00%	4	5	25.00%
Arts Schools and Instruction	16	18	12.50%	31	74	138.71%
Agents	1	2	100.00%	1	6	500.00%
<b>GRAND TOTAL</b>	<b>413</b>	<b>436</b>	<b>5.57%</b>	<b>1,774</b>	<b>1,870</b>	<b>5.41%</b>

Data Source: D&B January 2008 & January 2007

[www.AmericansForTheArts.org](http://www.AmericansForTheArts.org)